

Healthcare Executive Forum (HEF) of Western New York

An ACHE Chapter

In This Issue:

- Interviews with BNMC's Marla Guarino and Beth Machnica, and also VA's MaryAnne Gray
- What is FACHE?
- HEF Events
- Helpful Links
- More

Spotlight:

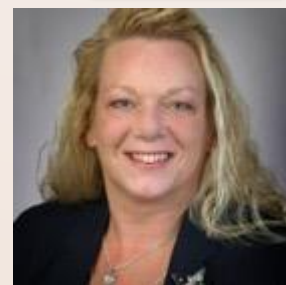
**Innovative, Collaborative, and Passionate:
Two WNY Leaders Bearing Healthy Fruit
- BNMC's Marla Guarino and Beth Machnica**

"You can't do anything alone..." [Read On](#)

Plus:

**Saving more lives through technology and RQI
– Veterans Health Admin's MaryAnne Gray**

"Doing CPR more effectively..." [Read On](#)



A Message From Our Leader

Brittney Carothers, MHA



As the leaves begin to turn here in Western New York, we are reminded that in order to grow and move forward we must embrace change! I am once again astounded at the ability of our community to adapt to an environment that is changing daily. We are still seeing an increase in strain placed on our healthcare systems from the pandemic, and even though we've been at this for a while now, there is still a need for renewed thinking.

■ The 30,000 foot view can still be useful; not only as we work toward improving the way we deliver care, but also as we are reminded that healthcare is more than just treating illness. Our focus this quarter echoes that as we discuss technology, how innovation fuels our propensity for change, and how this evolution ultimately benefits those in our community.

This issue looks at healthcare innovations from some of Western New York's most passionate drivers of change in health outcomes. First, we take an in-depth examination of the tremendous efforts of *Marla Guarino* and *Beth Machnica*, coming out of the Innovation Center at the Buffalo Niagara Medical Campus' Department of Health and Wellbeing, as they propel our entire community towards better nutrition through a range of programs, while also getting ready to host the upcoming [First Annual 'Food is Medicine' Symposium, Harvesting Health, on Saturday, October 16.](#)

Our HEF Treasurer, Roger Leising, also speaks with educator, innovator, and deeply dedicated healthcare professional, *MaryAnn Gray* from Buffalo's Veterans Administration Hospital, to discuss how new technology is saving more lives through a new CPR instructor training program called the Resuscitation Quality Initiative (RQI).

The Healthcare Executive Forum (HEF) is dedicated to being the preeminent professional society for leaders dedicated to improving health, with a combined mission of advancing both our members and healthcare management excellence. If you have any suggestions on how we can pivot our approach to best serve you, or if you have any questions, please contact me directly at bcarothers21@gmail.com.

Innovative, Collaborative, and Passionate: Two WNY Leaders Bearing Healthy Fruit

An interview with Buffalo Niagara Medical Campus (BNMC) Health and Well-being Department leaders Marla Guarino, BNMC Farm to Hospital Catalyst, and Elizabeth “Beth” Machnica, BNMC Director of Community Well Being.



Quick, think of those individuals you know that are extremely passionate about improving the lives of fellow Western New Yorkers, creating innovative programs and carrying out tremendously effective activities that touch the lives of so many, noticeably changing our community for the better. Then multiply by 10. Or, maybe by 100! That's Marla and Beth, two incredibly dedicated dietitians that have worked for years to provide WNY communities ever more access to healthy, affordable food, while also greatly improving the health effects along the distribution chain, from local farmers to large hospitals to consumers, especially for those in need. Sitting down with these talented, driven individuals, it is easy to see why so many groups they bring together become so energized when working with them to bring about healthier outcomes for us all. Their infectious energy rubs off.

Working out of the Buffalo Niagara Medical Campus' headquarters next to all the region's top healthcare companies, with offices above BNMC's Innovation Center facility where they have direct access to the most innovative thinkers around, Marla and Beth have clearly become skilled at creating bridges that synergistically multiply the positive work everyone is doing individually towards making us all healthier. Their department, "Health and Well-being," is currently working on critically improving food and wellbeing for the community through a number of unique small and large programs that involve the input from, and close collaboration among, various actors throughout Buffalo, from the heads of industry down to small local farmers. Beth explains how it all works saying, "We have state of the art facilities at the Medical Campus, like Gates Vascular Institute for example. If you have a heart attack or stroke, or are very sick, you come to the Campus to Gates. But we know that only 20% of someone's health outcome is determined by the direct healthcare they receive. The rest of it, the 80%, is your environment, the zip code in which you live, your behavior, your choices, and all that's inter-related. BNMC's Strategic Health Initiatives department is committed to targeting that 80%, affecting health outcomes through the environment, access to healthy food, active living, clean water, fresh air, greenspace, mental wellbeing and so on. Marla makes it clear that they aim to make the Buffalo Niagara Medical Campus a place where people are building their health, rather than just treating sickness... [Read the full article at the HEF website here](#)





Innovative Methods of CPR That are Saving More and More Lives – An Interview with MaryAnne Gray, VHA

The following is an interview conducted by HEF Treasurer, Roger Leising, with MaryAnne Gray, Critical Care Nurse Educator at the Veterans Health Administration (VHA) at VA Western New York Healthcare System.

In the interview, MaryAnne talks about the VA's efforts to incorporate new technology with novel training methods of CPR skills through the Resuscitation Quality Initiative (RQI), and much more.

To access and watch the full video, click directly on the picture below, or go to the [HEF website](http://hef.ache.org).



What is FACHE Anyway?

What is FACHE, Anyway?

The FACHE credential, although fun to say, is a prominent accolade for healthcare leaders. Becoming a Fellow of the American College of Healthcare Executives, signifies the commitment, expertise, and experience in continuing education and professional development. Just as members of the medical staff are board certified, having a FACHE credential indicates a level of achievement and competency within healthcare management and leadership. HEF provides its members seeking to earn a FACHE credential with a wealth of first-hand information, study groups with peers, and more. To learn more visit <https://www.ache.org/fache>.



American College of
Healthcare Executives
for leaders who care®

FACHE

*Fellow of the American College of Healthcare Executives
The Distinction of Board Certification*

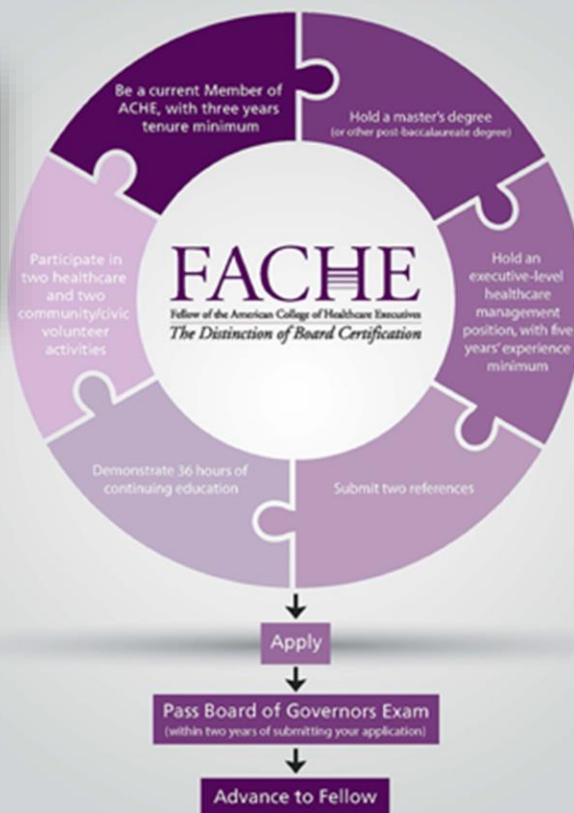
FACHE

*Fellow of the American College of Healthcare Executives
The Distinction of Board Certification*

**Don't Wait Until It's Too Late—
Recertify Your FACHE® Today**

If you are an ACHE Fellow whose credential is set to expire this year, now is the time to [recertify](#).

FELLOW ELIGIBILITY REQUIREMENTS



HEF EVENTS - SAVE THE DATES!

1) Friday, Oct. 29, 2021 8am-3pm - "Healthcare in 2022 and Beyond"

This is HEF's signature event forecasting WNY's prospective healthcare situation for the coming year. CEO's from Kaleida, Catholic Health System, and Roswell Park will speak. This event also includes panel discussions with a wide range of leading executives discussing important topics, and taking your questions. Healthcare in 2022 and Beyond is WNY's most anticipated healthcare event of the year. Don't miss it! Stay tuned for more info by frequently checking the [HEF website](#).

2) Tuesday, Nov. 9, 2021 1pm – 2:30pm – Virtual Forum: "Social Justice: The Impact of Policing and Education on Health"

This virtual forum combines a unique panel of community experts to discuss the critical social issues of today, and the role that mental health, nursing, and public policy can have on our health. The panel is set to include the current Cheektowaga Police Chief, a former Niagara Falls High School Principal, a current Niagara Falls Memorial Medical Center Board Member, and a current Stroke Coordinator at Mercy Hospital.

1) [Register NOW](#) for the Harvard Business School Club of Buffalo's 2021 Healthcare Management Program

Featuring four sessions of learning presented over four weeks, this health care management program will cover a variety of healthcare management topics through global case studies and classroom discussions moderated by several Roswell Park leaders and other regional graduates of the Managing Health Care Delivery Program at the Harvard Business School.

ACHE Events

- [Outcomes May Vary: The Crisis of Maternal Mortality in Preeclampsia](#) - Sept. 22, 11 a.m.–12 p.m. Central time
- [What's Next in Telehealth Strategy](#) - Sept. 30, 11 a.m.–12 p.m. Central time
- [Health System Simulation](#) Sept. 22–24 - 21 ACHE Face-to-Face credits
- [Behavioral Health Challenges, Strategies and Solutions:](#) - Sept. 28–Oct. 26 - 6 ACHE Face-to-Face credits
- [Hospitals and Health Systems of the Future](#) - Sept. 29–Oct. 27 6 ACHE Face-to-Face credits
- [Drive Physician Engagement Today for Aligned Leaders Tomorrow](#) - Oct. 12–Nov. 4 - 9 ACHE Face-to-Face credits
- [Mentor, Coach, Lead to Peak Professional Performance](#) - Oct. 19–Nov. 16 - 6 ACHE Face-to-Face credits
- [Artificial Intelligence for Leaders: Beyond Big Data](#) - Nov. 9–Nov. 18 - 3 ACHE Face-to-Face credits

volunteers needed

Are you interested in getting involved with the Healthcare Executive Forum?

Volunteers have the opportunity to collaborate with Board members on upcoming events and chapter strategies, to better serve our members and the WNY community.

Contact Phyllis Gunning at
Phyllis.Gunning@gmail.com
for more information.

<http://hef.ache.org>



Helpful Links



ConnectLife has a number of Buffalo Bills Promotions in their Blood Drives.

- Make an appointment with [ConnectLife to donate blood](#) today.

Make sure to get your annual screening done and let others with limited access know about mobile screening in Buffalo. Check the schedule for:

- [ECMC Mobile Mammography Unit](#)
- [Windsong Mobile Screening](#)

Erie, Niagara and all Western New York County Health Departments are continuing to update rules on healthcare worker vaccinations, masking, and more. An updated list of vaccination clinics can be found [here](#), but to find out more about rules in your area, go to your local county health department website:

- [Erie County Department of Health](#)
- [Niagara County Department of Health](#)
- [Genesee/Orleans County Departments of Health](#)
- [Chautauqua County Public Health Department](#)
- [Cattaraugus County Department of Health](#)
- [Allegany County Department of Health](#)
- [Wyoming County Department of Health](#)



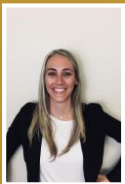
About Us

Healthcare Executive Forum, Inc. (HEF) is an independent chapter of the American College of Healthcare Executives (ACHE) in the Western New York Region. The chapter territory includes the following counties in New York State: Allegany, Cattaraugus, Chautauqua, Erie, Niagara, Orleans, and Wyoming.

Our Mission

The mission of the Healthcare Executive Forum, Inc. (HEF) is to advance healthcare management excellence through education and networking services, that meet or exceed the expectations of our members. The Healthcare Executive Forum will uphold and promote the mission and values of ACHE.

Chapter Officers



President

Brittney Carothers, MHA



President-Elect

Michael Ayanbadejo, MPH



Treasurer

Roger Leising, AEMT, RRT, MHA



Secretary

Kathleen Curtin, MBA, EdD



Regent

Kurt Calman, FACHE